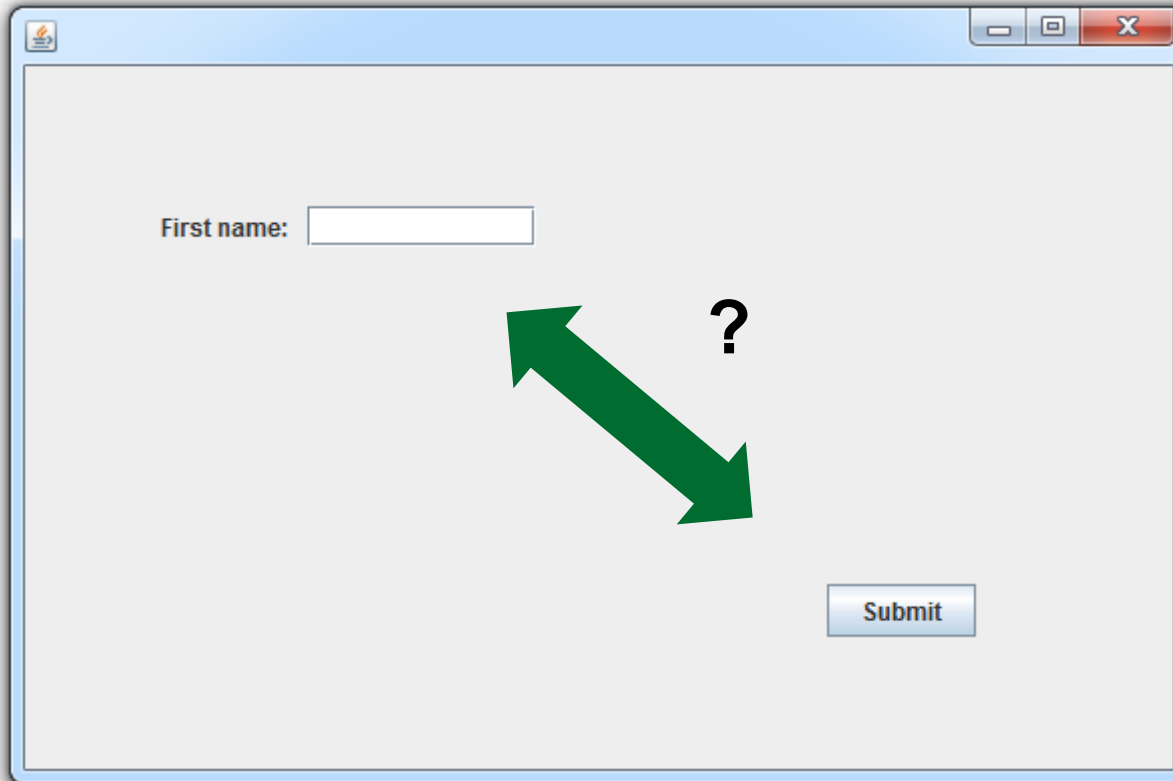


UI Layouts in Swing

Dr. Andreas Schroeder



Anordnung der Elemente? Verhalten bei Vergrößerung des Fensters?



Was dieses Video behandelt

- Absolutes Layout („Null Layout“)
- FlowLayout
- CardLayout
- GridBagLayout

Was es sonst noch gibt

- BorderLayout
- GridLayout
- BoxLayout
- GroupLayout
- SpringLayout

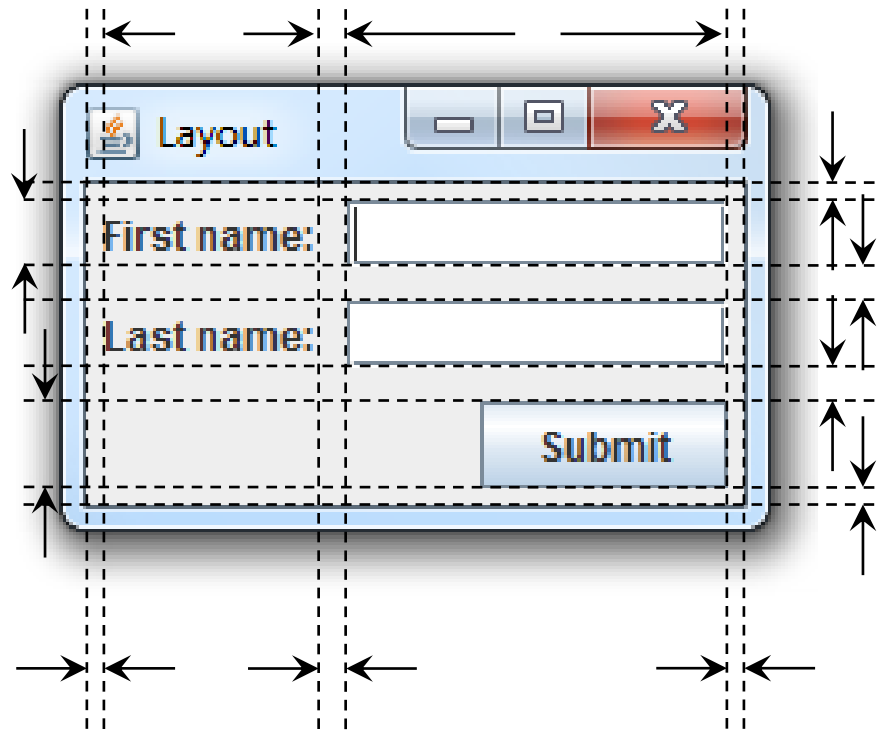
<http://docs.oracle.com/javase/tutorial/uiswing/layout/visual.html>

<http://docs.oracle.com/javase/tutorial/uiswing/layout/none.html>

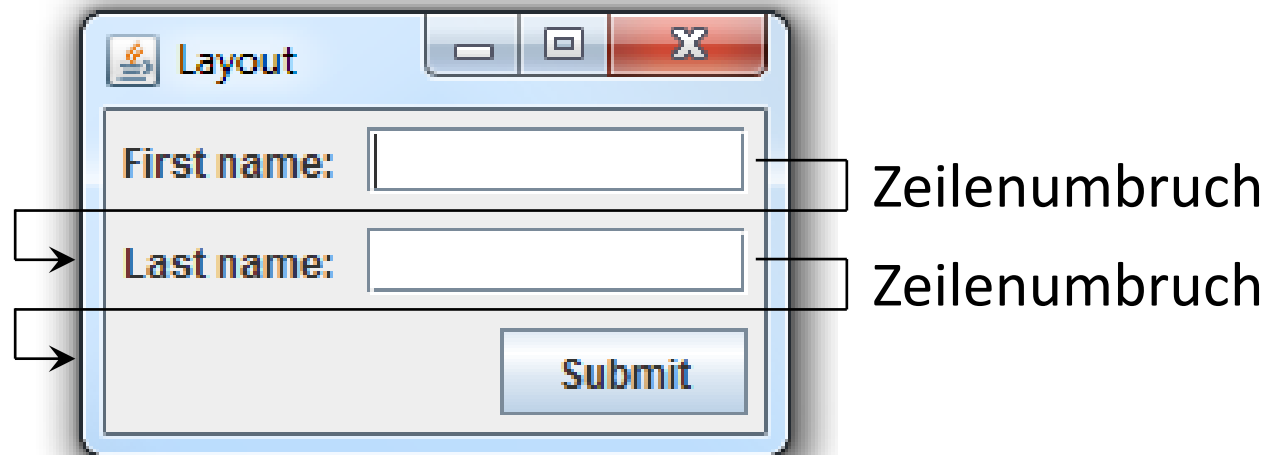
A screenshot of a Java Swing window titled "Layout". The window has a standard title bar with minimize, maximize, and close buttons. Inside the window, there is a simple form with two text input fields. The first field is labeled "First name:" and the second is labeled "Last name:". Below the input fields is a "Submit" button.

- Einfaches Formular
 - Zwei beschriftete Textfelder
 - Ein „Submit“-Button.

- Absolute Positionierung



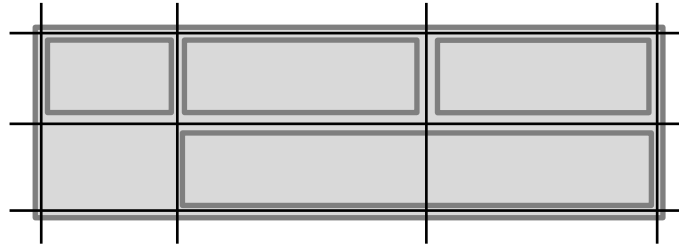
- Sehr einfaches Layout, wie automatischer Textumbruch
- Ausrichtung (alignment) der Elemente kann angegeben werden.



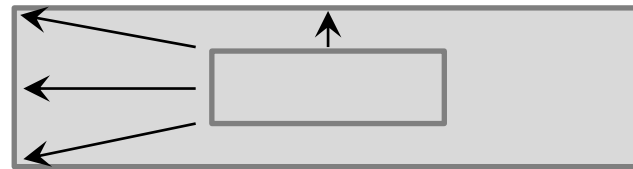


- Kinder werden übereinander gelegt
 - Größe des Containers = Größe des größten Kindes
 - Nur ein einziges Kind obenauf und sichtbar
 - Sichtbares Kind kann geändert werden
-
- Praktisch für die Realisierungen von Wizards und Inhalts-Wechsel.

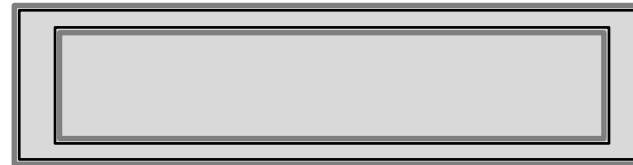
- Flexibles Gitter: Gitterposition und Gitterbreite/Höhe



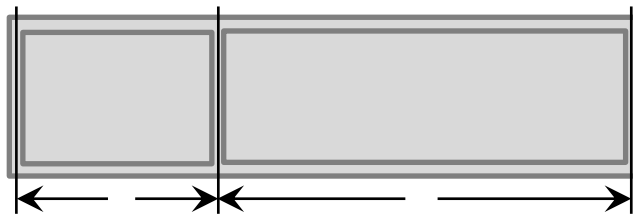
- Anchors



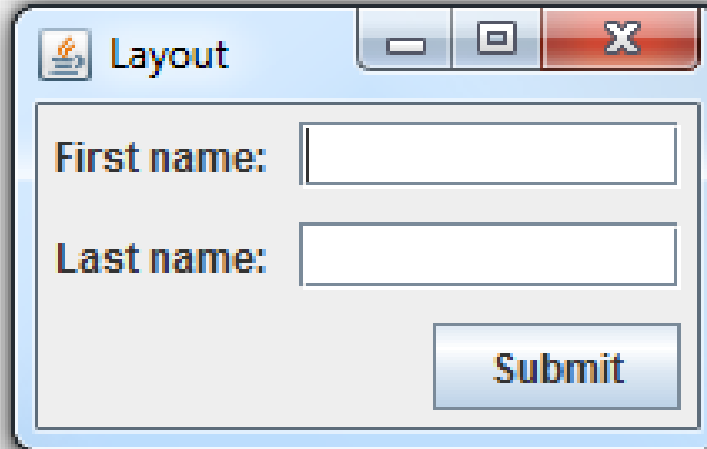
- Insets



- Gewichte



... am Beispiel



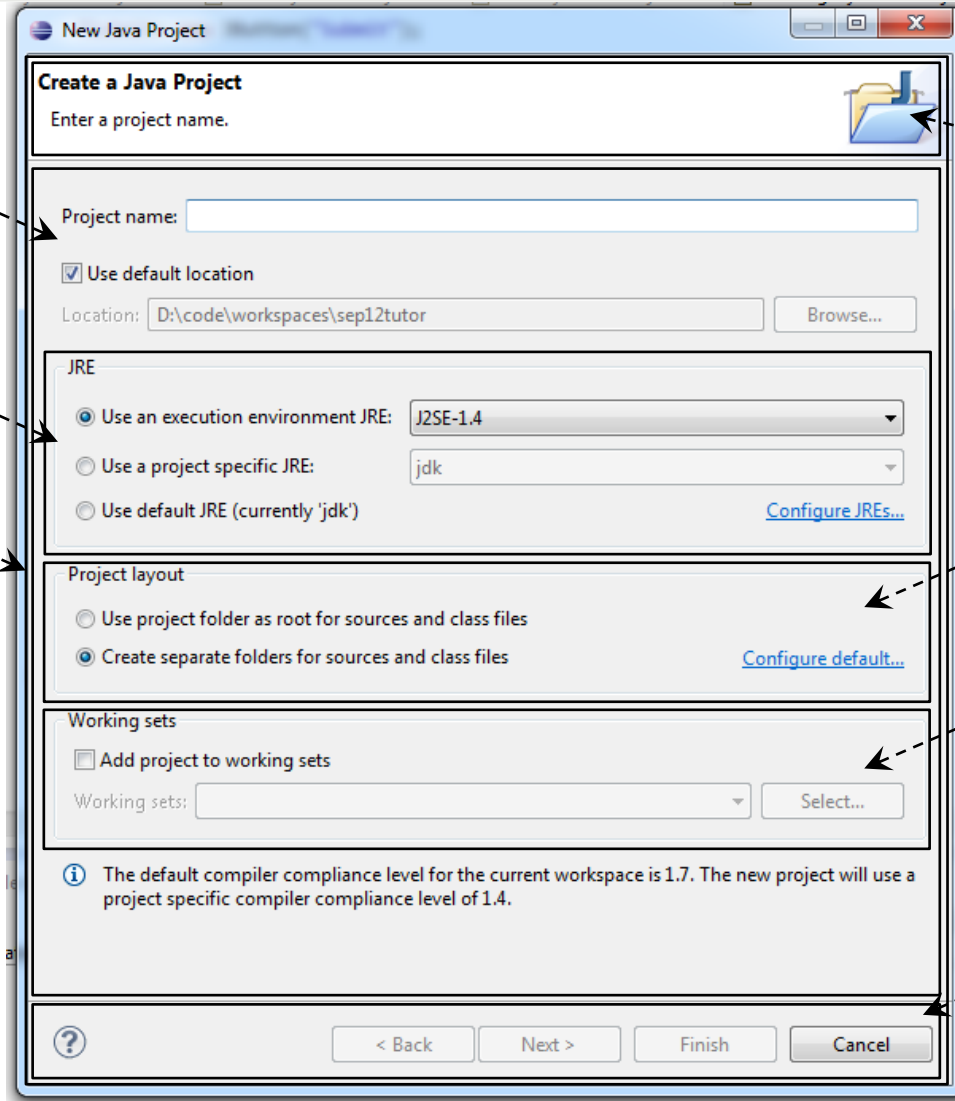
The image shows a Java Swing window titled "Layout". The window has a standard title bar with minimize, maximize, and close buttons. Inside the window, there is a form with two text input fields. The first field is labeled "First name:" and the second field is labeled "Last name:". Below the fields is a "Submit" button.



GridBag

GridBag

GridBag
in
Card



Flow

GridBag

GridBag

Flow



Was in diesem Video behandelt wurde

- Absolutes Layout („Null Layout“)
- FlowLayout
- CardLayout
- GridBagLayout
- Kombination von Layouts